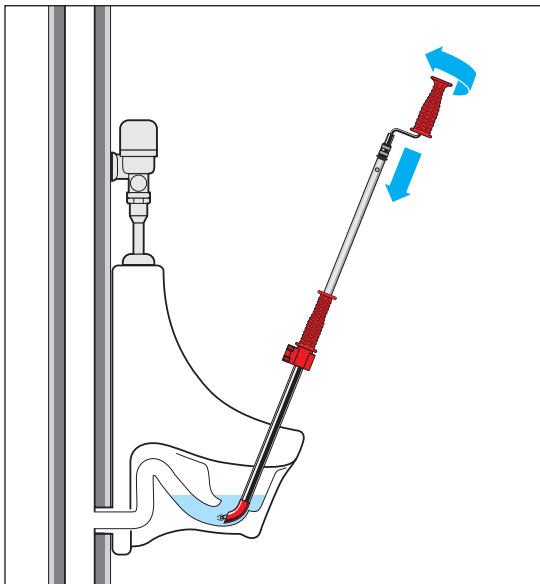


K-1 COMBINATION AUGER

The K-1 Combination Auger provides an all-in-one solution for removing blockages from urinals and shower drains.

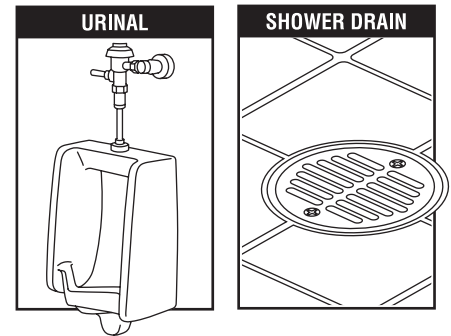


BENEFITS

- **Dual Power Operation** - provides additional power necessary for removing tough obstructions
- **Telescoping Design** - provides additional cable length needed to remove obstructions further down the line
- **“C” Cutter Head** - ideal for breaking up hard blockages
- **Left Hand Wound Cable** - strengthens cable and prevents kinking

SPECIFICATIONS

- Pipe Sizes Up to 2"
- Cable Length: 4 feet
- Cable Diameter: 3/8"
- Operation: Manual or Drill Powered
- Applications: Urinals & Shower Drains
- Cutter Head Type: “C” Cutter



RIDGID.COM

ORDERING INFORMATION

CATALOG NO.	DESCRIPTION	WEIGHT	
		(lb.)	(kg)
46683	K-1 Combination Auger	5	2.3

999-997-384.10